

**Follow along with us as we cruise onboard our
56' Ocean Yacht.**

Somewhere on the Water

February 5, 2022, Day 60

Saturday – Overnighted at St. James Marina, Southport, NC

Tonight anchoring.

What started as a calm morning with just one or two things that needed to get done before we left St. James Marina quickly turned into a hectic race against time.

A timeline that we set for ourselves to leave the marina around noon at high tide so we could cruise north a couple of hours and set anchor for a couple of nights.

What were we doing?

Laundry

Dishwasher

Showers

Trash

Working on GPS issues

With much frustration building between me and my, computer Mark took over the coping & moving of files and photos between multiple devices and flashing error messages, etc. While he was working on that, the freshwater tank went dry. We needed to fill our water tank asap. Because it went dry the 12volt pump & the 110volt pump were sucking air and needed attention.

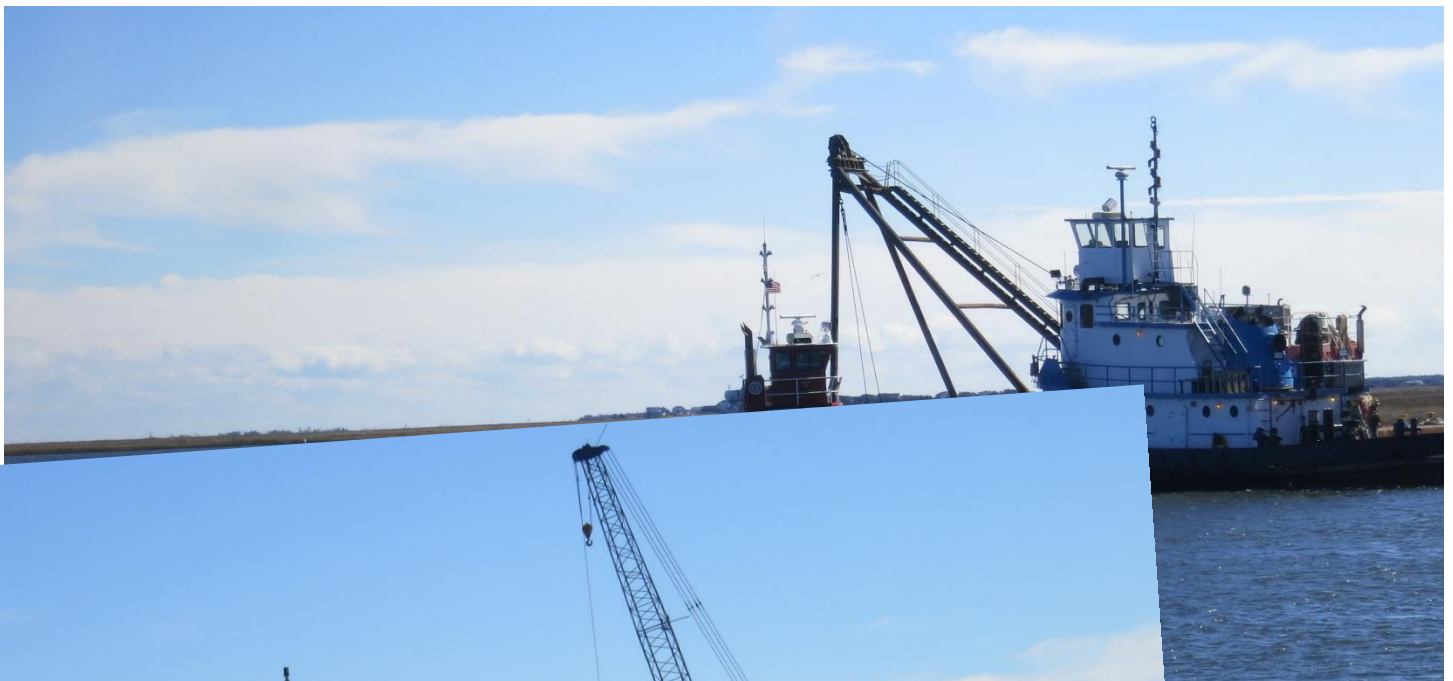


Repriming the pumps takes time because the fresh water tank is downhill below the pumps and about 15-20' away so trying to prime the pumps is not easy. It takes patience and it is only the second time that we have had to prime the pumps. The first time was because Mark replaced the 110volt pump, this second time is because we ran the water tank dry.

12:ish we started the engines and prepped to go.

Leaving at high tide to travel to Pleasure Island, Carolina Beach, NC for one or two nights at anchor.

We are traveling Cape Fear River into Snow's Cut which is a difficult area. Lots of shoals and narrow channels to maneuver. High tide will make navigation easier and give more room for error.



Within ½ hour we meet up with and pass a dredging operation. Now a familiar sight.

We made the turn into Cape Fear River around Southport at 1:00 p.m.

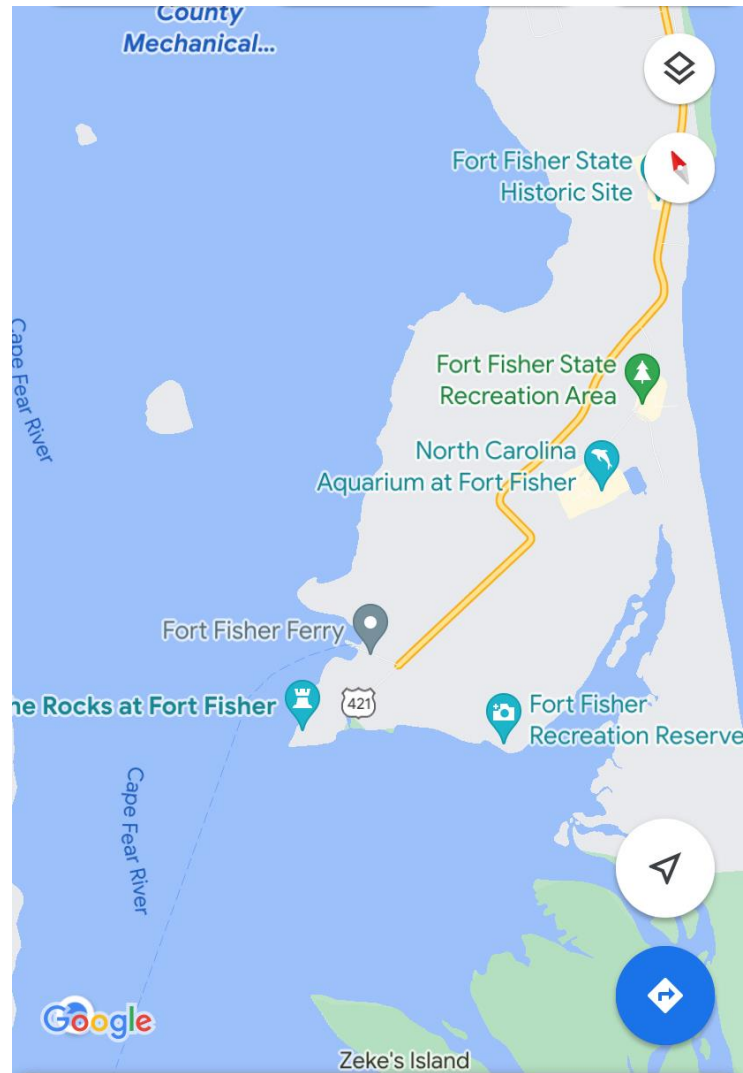
There is a little bit of salt spray on the windshield. This part of the river is wide so the wind has plenty of opportunities to stir up the water.





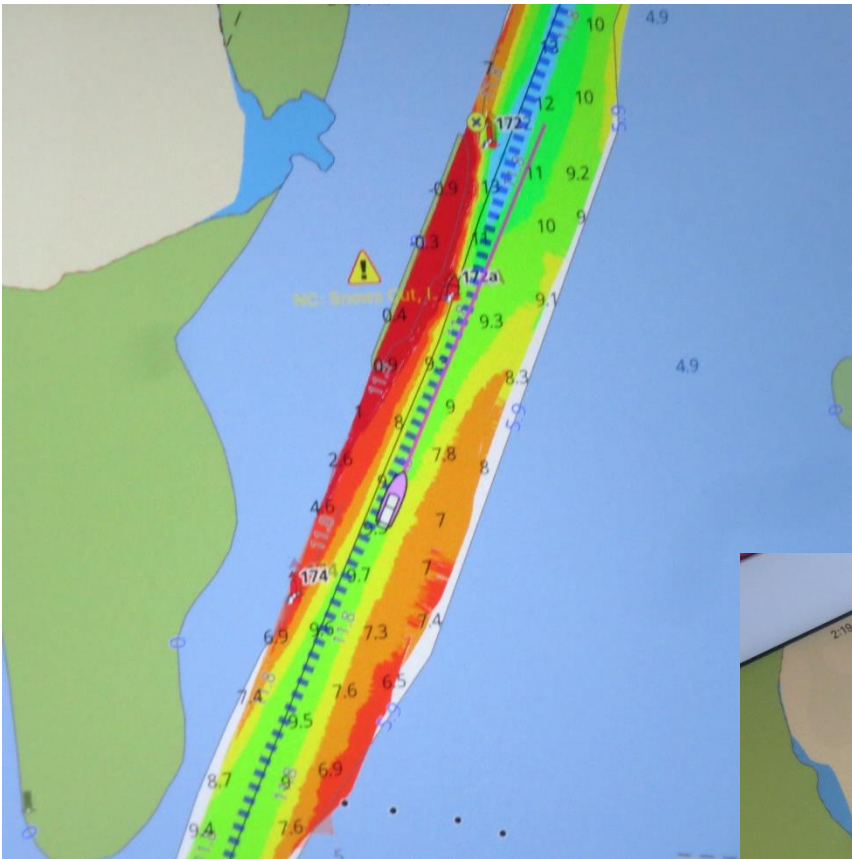
We are in a ferry lane here. We just met one that was filled with cars and passengers. Headed south.

We are going through Horseshoe Shoal. I snapped a photo of one of the Horseshoe Shoal Range Lights and the ferry about to dock on Fisher Island. Historic sites such as the Rocks at Fort Fisher, Fort Fisher includes Battery Buchanan along with several other sites that are all connected to this same historic area. There is the NC Aquarium at Fort Fisher and the NC National Guard training center.



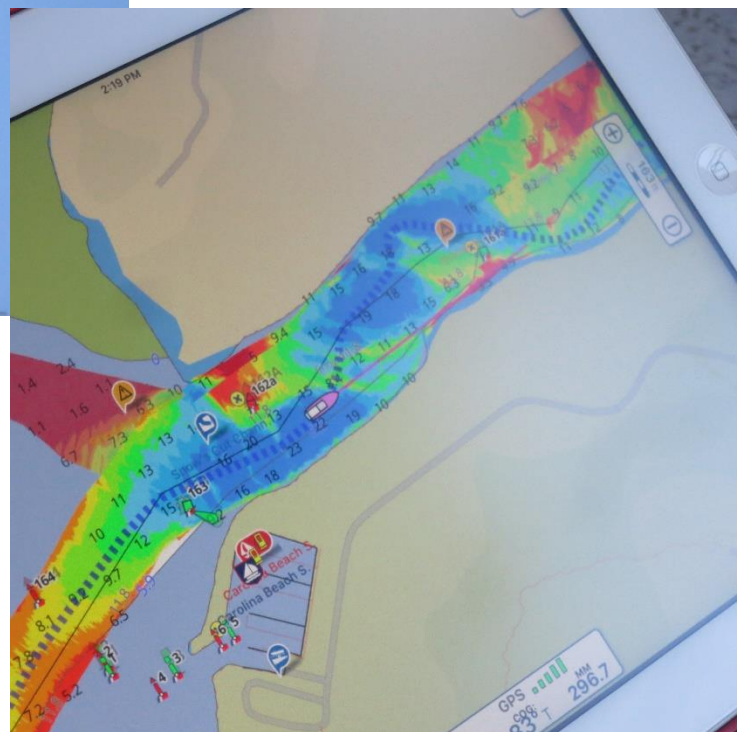
We also pass by (not through) the South of Onslow County Mechanical Harvesting of Oysters a marine protected area.

2:10 p.m. we got rocked by this boat...appropriately named Rock Me Baby,



The anticipation of going back through Snow's Cut was worse than doing it.

At high tide, it is a bit easier however there was a dredging operation that took up a good amount of an already narrow passage.



We came in from Snow's cut and banged a right into the anchorage at Carolina Beach, NC.

This is a recommended anchorage from *Active Captain*, & *The Waterway Guide*.

The blue dotted line in the photos of the iPad is the line we need to follow to remain in the deepest waters and avoid running aground.





Mark is in the process of putting on a snubber in this photo.

Once the anchor was set, we had cocktails in the flybridge with the sun beaming on our backs. The shorebirds provided us with entertainment. Haleigh made dinner and we called it a night.

Stay tuned for more information on what an anchor snubber is all about, our anchor alarm issues, and more!

