

**Follow along with us as we cruise onboard our
56' Ocean Yacht.**

Somewhere on the Water

March 3, 2022 –Manasquan, NJ to Brooklyn, NY
Day 86 - Thursday

What a noisy morning. It is wonderful to have been able to tie up to the fuel dock here in Manasquan, NJ. The wind however is pushing us up against the dock and our fenders are squeaking and squealing with the weight of the boat pushing up against them.

The noise started overnight and Mark got up a couple of times because one of the fenders got pinched out from between us and the dock.

\$1.50 / foot tie-up fee & \$3.49/gallon at 184 gallons (with Boat US discount)

This was last year's price. Captain Bills charged last Fall's price. This is the marina's daily rate based on what he paid for fuel when he filled up his storage tank. His price will change when he runs out and has to buy more fuel. Some marinas price their fuel this way while others just go by the daily rate regardless of what they paid to buy it.

The original plan was to stay here this morning leisurely and then tie up to a different dock at a marina here in this harbor. Plans changed. The weather next week is looking grim for the Rhode Island Sound and could trap us in the Connecticut area extending our return date by as many as 5 or more days so today we are planning NY overnight and then pushing for a long day into Connecticut Friday and Saturday trying to reach Cape Cod Sunday.

Another contributing factor to not staying at the other marina here in Manasquan tonight is the \$5 per foot plus electricity fee. Brooklyn is not that expensive so northbound it is. The cold weather dictates that we need electricity to run heat but not at \$5 per foot. The tie-up here at Captain Bill's fuel dock was less than inviting and did not offer electricity so that is not an option.

The plan to make our ever-so-slowly northbound journey just turned into a; get there quickly plan.

9:30 a.m. Mark is taking on fuel.

When I thought we were going to be here today and into tomorrow I was going to go ashore and walk around. This area looks very quaint and several people mentioned that there are some very good restaurants here. By the number of fishing boats I see docked here I bet the seafood restaurants are plentiful and delicious.

Well, there goes another town that we stayed overnight that I did not get ashore to explore.

Arriving safely and timely at each destination is the priority. This trip has been about many things and accomplishing many different goals.

At 10:40 a.m. it has warmed outside to 44 degrees. We are hitting waves head-on maybe 2-3feet.

Inside the salon is 65 degrees.

Traveling close to the shore today. The winds are coming from onshore so hopefully, this tactic keeps our ride a bit smoother. We are traveling at 6.9 knots and I am just looking up from my desk and seeing the Manhattan skyline in our forward view. We are staying at the same dock at the One 15 Brooklyn Marina we did back in December. Going this slow keeps our ride smoother, more economical and our arrival eta is 3:30 p.m.

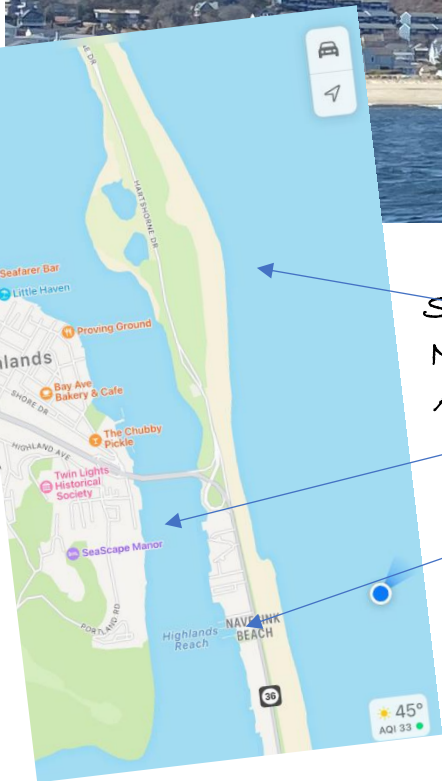
I do not have much to say about our view today. It is the same house, hotel, condos, clubhouses, etc. lining the shore that from our point of view is nothing too exciting. However, I bet the people looking out onto the ocean love their view. Although windy it is clear skies and you can see for miles. A few people have braved the cold to walk their dogs along the beach.

It is 12:30 p.m. I took a photo of the Captain Joseph Azzolina Memorial Bridge that connects the outer island to the mainland. Once called the Route 36 Highlands Bridge. It is now named after a US Navy Veteran and founder of Food Circus supermarket plus several other impressive contributions on his resume. In the photo, you can also see the Twin Lights.

https://youtu.be/2CaVF_ItaFU -video of Sandy Hook Beach, NJ

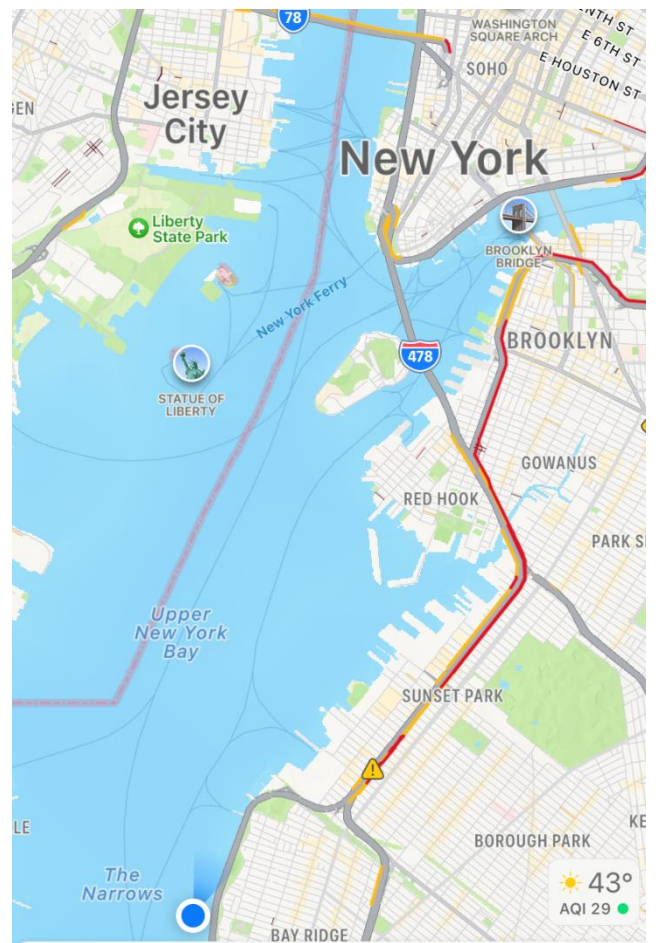
When Henry Hudson first saw the high hills here in 1609, he described them as being a very good land to fall with and a pleasant land to see. Indeed, there are many firsts associated with the Twin Lights, which tower 250 feet above Sandy Hook Bay, on one of the highest points along the coast. This is where the United States first Fresnel lens was located; Guglielmo Marconi demonstrated the first practical use of the wireless telegraph from Navesink in 1899; the first lamps to be fueled by kerosene were used here in 1883; and in 1898, it was one of the first electrically lit seacoast lighthouses in the country. The present day brownstone double lighthouses were built in 1862 on the site of the original 1828 Navesink Lighthouses. Twin Lights was decommissioned in 1949, the handsome building today houses a museum of lighthouse and lifesaving station artifacts, offering films and slide shows. Spectacular views are available from atop the medieval-style towers.

<https://visitnj.org/nj-attractions/twin-lights-historic-site>

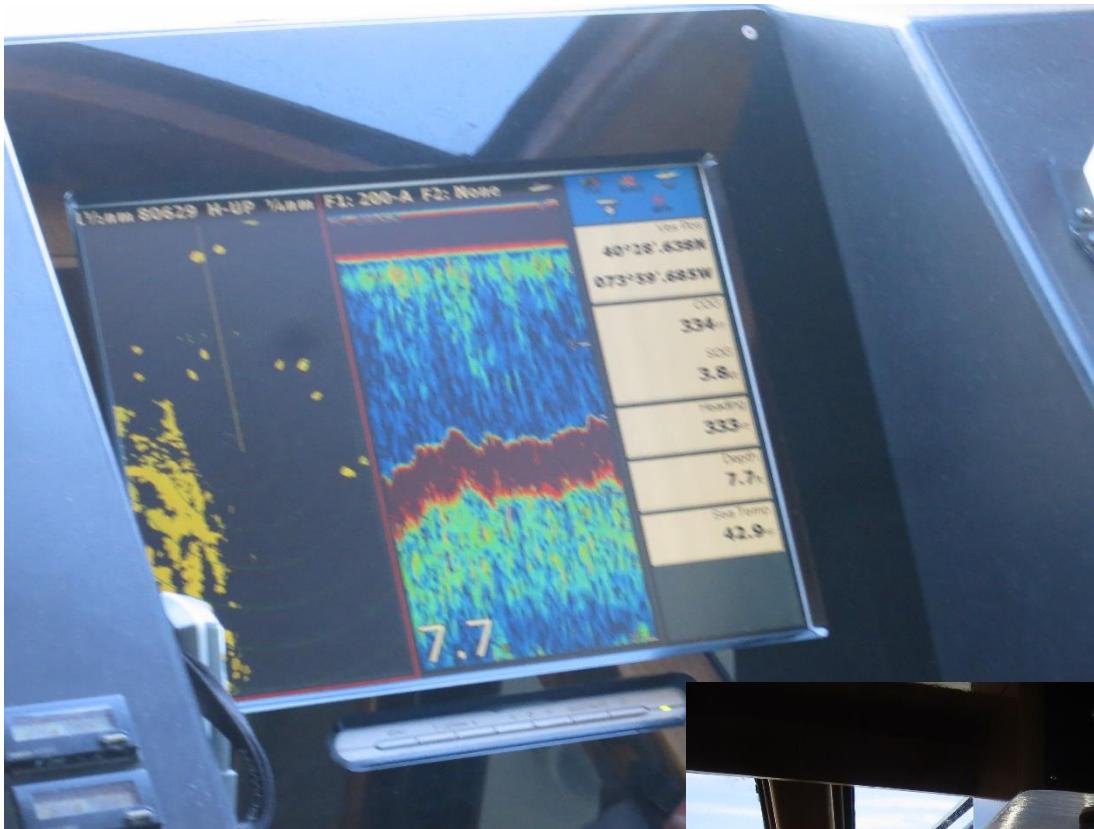


Sandy Hook Gateway
National Recreation
Area, NJ
Highlands, NJ

Bridge



On our way to the marina we will be navigating:
Sandy Hook Channel crossing into New York from New Jersey.
Lower New York Bay
The Narrows
Upper New York Bay passing the Statue of Liberty
East River



When rounding Sandy Hook there is a shoal with charted depths down to 10feet at the lowest. Between Sandy Hook and this shoal is a channel called False Hook Channel with reported minimum depths of 18feet. What we discovered on our way south is right at the tip of Sandy Hook as you enter into False Hook channel actual depths as low as 6 feet.



Traveling north we were prepared for this and were able to pull back on

the throttles and navigate this area at *dead slow ahead*. Looking at him confused...he explains. The engine room telegraph is used to communicate on a large ship the requested speed from the bridge to the engine room. He does not know what they all say but some of them are: "all stop," "dead slow ahead." "full ahead."





See here

It reads
20feet
depth.

We were
in 6feet.

As a reminder:

The depth displayed on Valkyrie's monitor is actually 2 feet below the surface of the water. Mark does not use a depth offset but knows that the transducer on the bottom of the boat is 2feet below the waterline and 2 feet above the lowest point of propellers and running gear.

If the depth monitor says 2feet – we are touching the bottom.

When it reads 6feet = we are in 8feet of water.

New York Harbor is at the mouth of the Hudson River where it empties into New York Bay near the East River tidal estuary, and then into the Atlantic Ocean on the east coast of the United States. It is one of the largest natural harbors in the world-Wikipedia

Coming into New York I was able to get better pictures of Coney Island, Swinburne Island, and Fort Wadsworth than when we left this harbor back on December 13. <https://youtu.be/a38bEsdWKL0> - video with Coney Island



Coney Island



Robbins Reef Lighthouse

On March 3, 1837, Congress appropriated \$50,000 for a lighthouse on Robbins Reef...On March 3, 2022, the Corbett family onboard Valkyrie cruises by Robbins Reef Lighthouse...

This sparkplug lighthouse is actually in the state of New Jersey.

Read about this lighthouse here:

<https://www.lighthousefriends.com/light.asp?ID=582>

<https://youtu.be/a7ZI8LJXRpc> - getting hit by waves in NY Harbor

Fort Wadsworth



The Dover Patrol Monuments are a trio of war memorials designed by Sir Aston Webb to commemorate the Royal Navy's Dover Patrol of the First World War. Two identical granite memorial obelisks, 75 feet high, were erected near Dover and on the Cap Blanc-Nez near Calais in 1921 and 1922. [Wikipedia](#)

Verazzano-Narrows Bridge

Coming into the NYC Harbor is very exciting. There is so much to see and there is a lot of water traffic and debris so you need to stay on alert.

What kind of debris: trash, logs, plastic pipping.



Bayonne Golf Country Club, Bayonne NJ





Statue of Liberty & Governors Island with Manhattan in the background.



Governors Island, at one time the longest continually operated military installation in the country, closed in 1996. There is a daily ferry to the island and a lot is going on here...check it out if you want.
govisland.com

The wind was something else coming up through the harbor and into the marina. The wind was blowing us off the dock so thankfully we had two marina dockhands to help us. Prioritizing the electricity hook up to get the heat on and then the rest just fell into place. We were comfy in no time; until a ferry went by and their wake caused a sunami in our direction.

During the trip, we got hit by a lot of sea spray so Mark had to wash the windows. – video

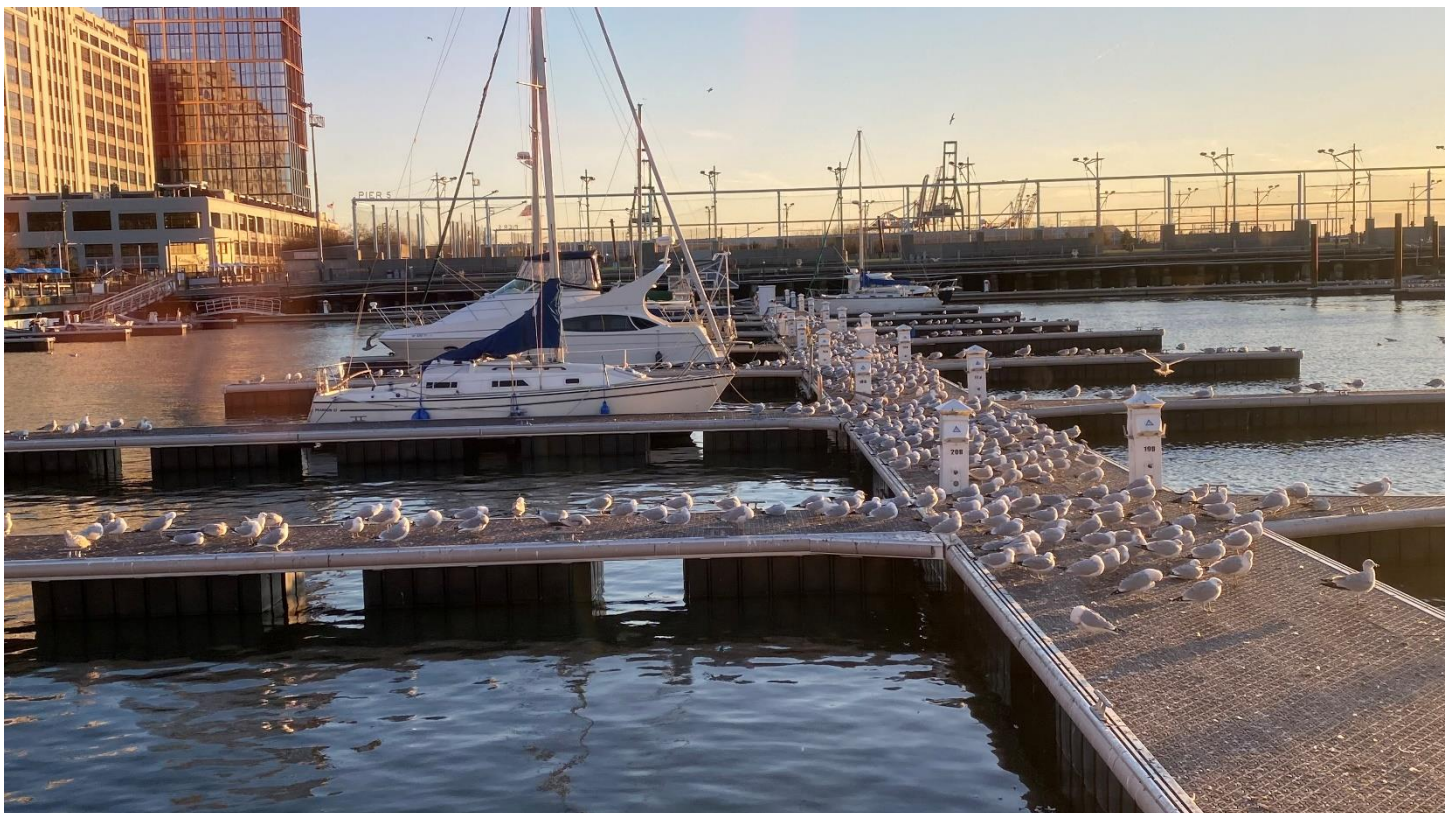
Because temperatures are going to be so low and below freezing, Mark had to winterize the saltwater anchor washing system and the freshwater spigot right outside the starboard helm door.

Once Mark had a chance to sit down he planned our exit for tomorrow morning on the East River which includes the infamous Hell Gate.



I love this view! It is amazing. We can see the Statue of Liberty but she is a bit far away from my cameras to capture a great photo. Oh my, I could never tire of this view...Love it!

Shortly after dinner, the ferry passings lessened, the wind was still cranking, however, and we were in the midst of an Alfred Hitchcock movie with the number of birds around us. Although I do know that in the movie [The Birds](#) it was scarecrows/blackbirds that attacked, but still a little creepy with the number of seagulls surrounding us.





Looking beyond the seagulls that have perched themselves along all the docks here at the marina – the view is fantastic. The sunset seemed to linger and cast a golden glow for a long time. Perhaps a sign that spring is coming and our days are getting longer.





Mark deservedly so went to bed early. Haleigh and I marveled at the view and stayed up chatting until 11:00 p.m.

I took some pictures and a video.

