

**Follow along with us as we cruise onboard our
56' Ocean Yacht.**

Somewhere on the Water

Update Winter Cruise 2023-2024

Day 4 – December 4, 2023 - Norwalk Cove Marina, CT to Jersey City, NJ

Departure time: 7:00 am

Arrival time: 1:30 pm

Total hours cruised: 6.5

Average speed: 7 knots against the current

4 knots in the East River against the current

Weather: Partly cloudy, 48 degrees

west winds at 10 mph with 17 mph gust

6:30 am alarm

7:00 am engines started, electric disconnected and lines in

We are cruising from Norwalk, CT towards NYC today in the Long Island Sound into the East River.

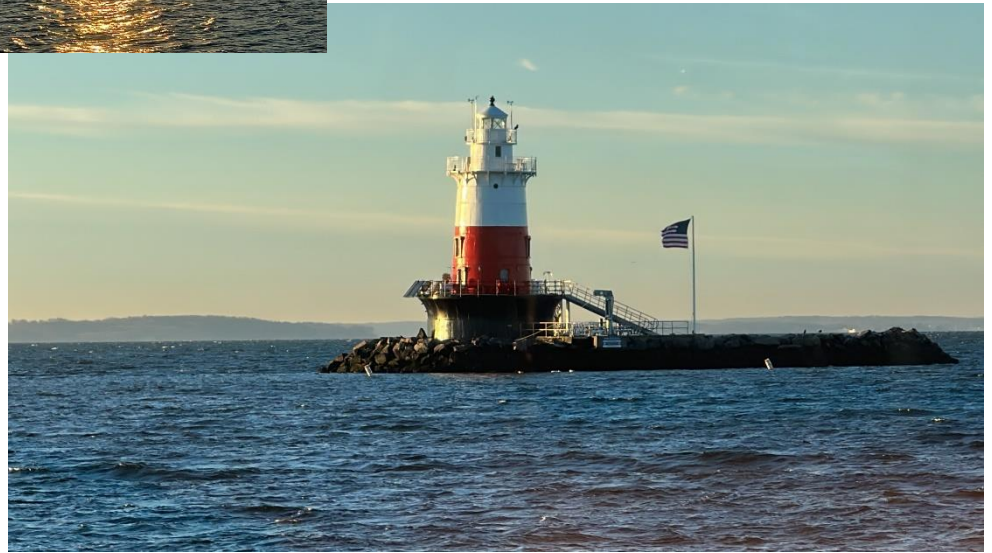
Being that today is a Monday, I have to work. I will be taking video & photos inbetween work calls, it could get hectic, but I will do my best. (I am taking photos and video on my iphone today.)

Norwalk's seashore is beautiful. Large, gorgeous homes, lighthouses, and several tiny inhabited islands. We saw a couple of crew boats. One was nice enough to wait for us to pass but the other decided to cross in front of our bow. I am not sure if they were rowing or skulling. I believe there is a difference, I just don't know the difference.

We had a beautiful sunrise. We haven't see the sun in 2 days so we were happy to see it this morning.



One of the lighthouses we saw this morning is the Green Ledge Light.



Little bit of trivia:

Recently the Green Ledge Light received a 2-million dollar renovation and is now open for tours. It is one of 33 sparkplug lighthouses still in existence in the United States and remains an active aid to navigation.

This boat we think is claming.



Around 10:00 am I started taking video. We were entering the East River arriving at NYC. One of the first things that I saw was Hart Island.

Little bit of trivia:

Hart Island serves as the City's public cemetery and is the final resting place of over one million individuals. The city still conducts about 1,100 burials every year on Hart Island, adding to the million bodies already buried on this 131-acre strip in Long Island Sound off the coast of the Bronx. But in the coming months, the dead will share the island with nature classes and guided tours.

Some of the points of interest we saw:

- US Merchant Marine Academy
- SUNY Maritime College

Little bit of trivia:

There are 6 Maritime Academies in the US. The six maritime academies educate young men and women for service as officers in the United States Merchant Marine, U.S. Armed Forces, and the Nation's intermodal transportation system.

- La Guardia Airport
- Rikers Island
- North Brother Island and South Brother Island

Little bit of trivia:

No one has lived on North Brother Island since 1963. For almost a century, the island served a particular purpose. It was purchased by the city in the 1880s to build a hospital for patients suffering from diseases like typhus, tuberculosis, and smallpox.

- Roosevelt Island & The Roosevelt Island Aerial Tram

Little bit of trivia:

Roosevelt Tram is the oldest urban commuter tramway in the U.S.

- Brooklyn Bridge
- Balloon Museum (What??!!! I wanna go there!)

Little bit of trivia:

Opened on May 24, 1883, the Brooklyn Bridge was the first fixed crossing of the East River.

- United Nations
- Empire State Building
- Governors Island

Little bit of trivia:

Governors Island was one of the longest continually operated military bases in the country, operated for two centuries, by the U.S. Army and later the U.S. Coast Guard until its closure in 1996.

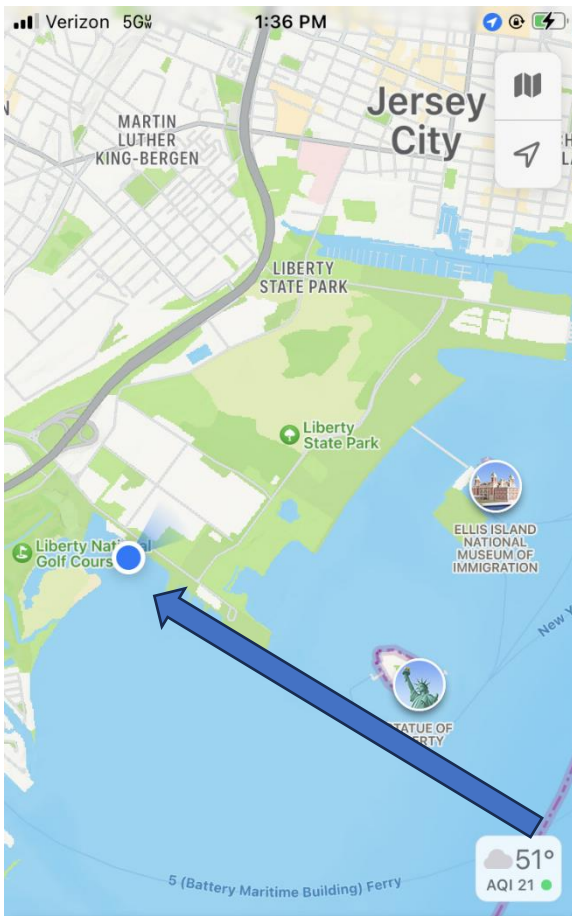
- Statue of Liberty & Ellis Island National Museum of Immigration
- Ellis Island Immigrant Hospital



The most waves we hit today were from the ferry's wake in the East River. A welcomed change from the last few days!

There are so many new buildings being built, and so much construction along the river. It seems like...the next few years NYC's skyline is going to look completely different.



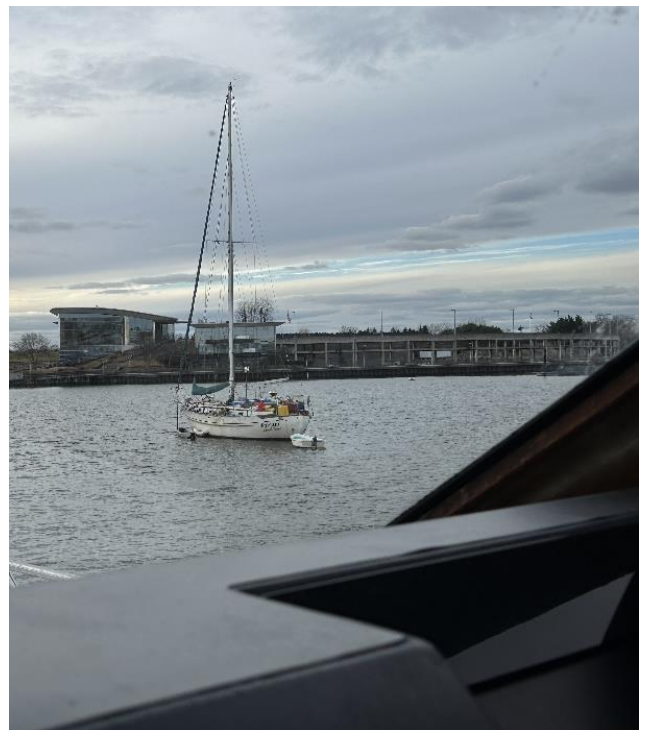


After we anchored, I caught up with work calls, Mark made arrangements with Captain Bill's Marina for tomorrow night's dockage and fuel. In addition, Mark spent some time in the engine room to top off fluids and double-check everything. We seem to be going through our freshwater fast. That is not good. Maybe we are using more than we think or maybe there is a leak in the tank. We have had two (or more maybe) patches to that tank. The bilge counter went off but Mark thinks that it is probably from when we got jostled around the meter also gets jostled and set it off.

Our anchorage is behind the Statue of Liberty next to the Liberty State Park, & Liberty National Golf Course, Jersey City, NJ.

There are four sailboats at this same anchorage. Two on moorings and two at anchor. One of the sailboat occupants popped his head out upon our arrival as Mark was getting the anchor ready to be dropped and said he thought we were too close. What??? Does this guy even know how anchoring works? By the time we set our 60 feet worth of chain, we won't be anywhere near him.

What do you think? Are we too close?



We are expecting very cold temperatures tonight. 38 degrees. We will run the generator for heat but will shut it off before we go to bed. Typically we do not run the generator while we are sleeping. Let's see how it goes!



Today's video link: <https://youtu.be/0H3CHYAYGDc>

Stay
tuned

Time is unrenowable and tomorrow is never promised so do it before you can't!