

Follow along with us as we cruise onboard our
56' Ocean Yacht.

Somewhere on the Water

Update Winter Cruise 2023-2024

Day 14 – Thursday, December 14, 2023 – Robert Reeds Park to the town marina, Chincoteague.

We departed this morning around 9:30 am to move to the town marina where we will try to run a water hose from the office building to Valkyrie.



We are just about out of fresh water. Yikes.



If we let the water level get too low the water pump will start to pump air which we do not want to happen. The pump will lose its prime and regaining it not easy so we are going to do our best to avoid that situation.

The Chincoteague Channel, aka Chincoteague Inlet, which I mistakenly called a river a few times is not necessarily narrow but when you consider the water depths that we need it is so we have to move at high tide.



Little bit of Trivia:

The Chincoteague Inlet Federal Navigation Project is a Section 107 Continuing Authorities Program project. The Corps maintains a channel depth of 12 feet and a width of 200 feet from the Ocean Bar in the Atlantic Ocean to the mouth of the inlet. The second component is a channel nine feet deep and 100-150 feet wide from the inlet through the “canal” and then along Chincoteague Channel until just south of the state highway bridge to Chincoteague. The entire project distance measures approximately 6.9 miles.

It is typically dredged at least once a year, depending on funding availability.

Info & map photo credit: <https://www.nao.usace.army.mil/About/Projects/ChincoteagueNav/>

Tomorrow, Friday, we will leave the Chincoteague Channel and travel through the Chincoteague Outlet into the Atlantic Ocean. We will cruise South to the Chesapeake Channel and into the southern portion of the Chesapeake Bay crossing over the Hampton Roads Bridge-Tunnel eventually making our way into the James River to the Elizabeth River so we can anchor in Norwalk, VA.

Once we made it to the Marina we tied up to dock Z. We will not have electricity but that is ok. We are here for water. The wind pushed Valkyrie up against the dock which is helpful until you try to put the bumpers into place, then you have to push this 54,500lb (27-ton) boat off the dock to squeeze them in between the dock and the boat.

Vernan, the Harbor Master got us squared away with water right away. Thanks to an extremely long hose that ran approximately 200 feet across the docks. Mark did test the water quality before running it into the tank. It tested well which was a relief and proceeded to fill the 150-gallon fresh water tank.

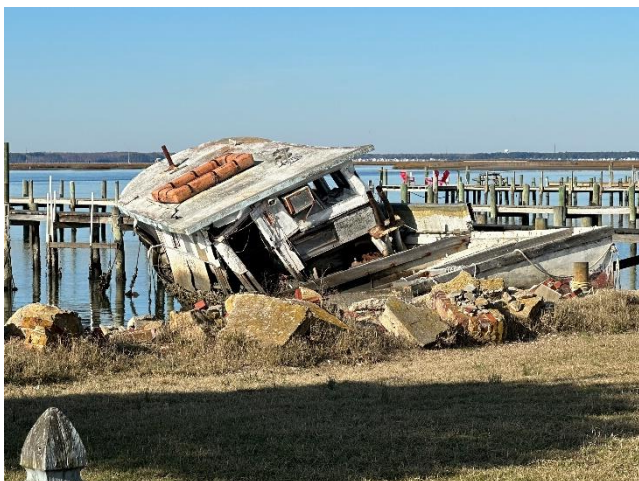


Our next mission was to visit the Chincoteague Island Waterman's Memorial which was created to honor all local Watermen and Military Servicemen who were lost at sea.



We continued our walk from there along Main Street North.

57 minutes 2.83 miles or maybe longer because Mark didn't turn his watch onto workout mode until we had already walked a while. Either way, it was an adventurous walk and I was happy to have the company after walking along the last couple of days.



We saw a variety of things along our walk. We passed the newest waterfront RV Resort & Campground. They boast a glamping-style environment with cottages as well as

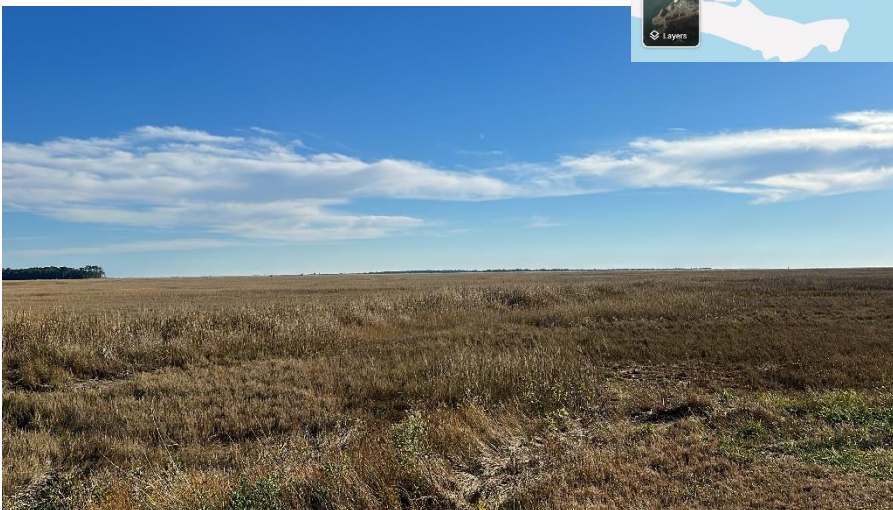
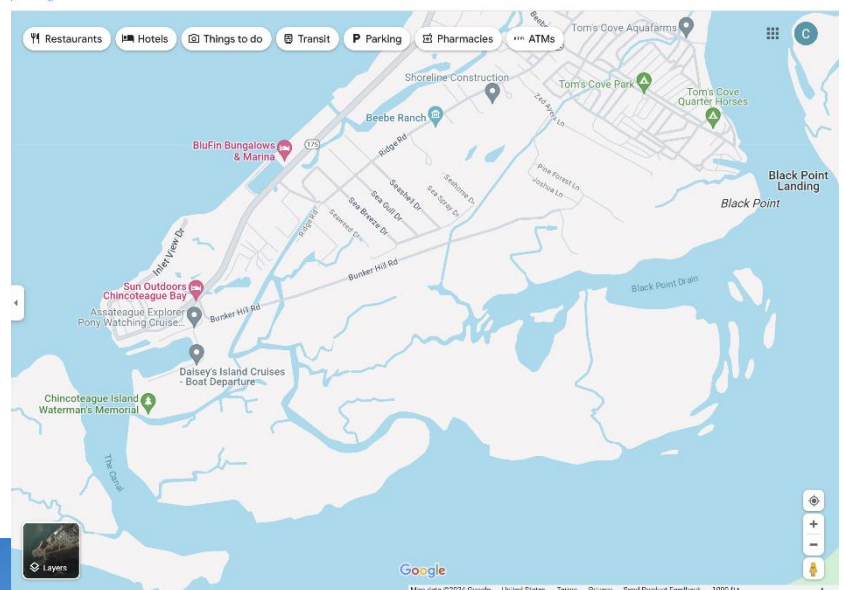
paved parking sites for your RV. We also passed Blu Fin Bungalows and Boats. These bungalows are Boat Bungalows and are one option for renting.

<https://blufinbungalowsandmarina.com/>

<https://www.sunoutdoors.com/virginia/sun-outdoors-chincoteague-bay>



Everything is an adventure with Mark. We walked North on Main Street, turned onto Beebe Street, and somehow ended up on Bunker Hill after trekking through a small 'hood' that is not on any tourist map, has dirt roads no wider than a driveway and at one point we had to squeeze through a fence with a do not enter sign just to get back on track towards the marina. We ended our adventure walk with this gorgeous view.



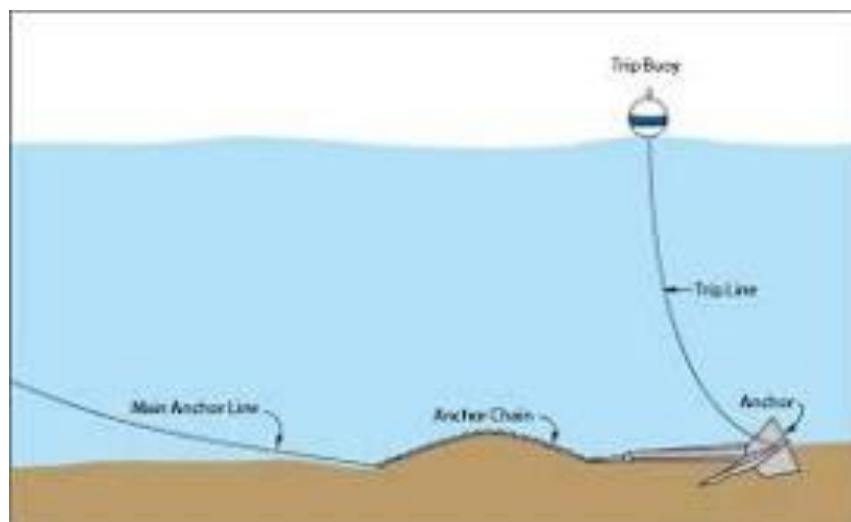
Dinner was steak tips, green beans, and sweet potatoes. Yum! I don't normally cook steak because I am afraid I will turn it into rubber, but these steak tips were delicious so I am tooting my own horn here and saying yum!

Mark met one of the boaters here at the marina. From Derry, NH they are taking their first ever trip on their boat to Florida. Sean and his wife. They hit something, doesn't know what, but something happened and now he has a sheered propellor shaft. He has been held up here on Chincoteague Island for 2-weeks. Tomorrow he is headed to Cape Charles to get the boat fixed. Hitting something, anything, no matter what size can cause major issues. Their situation is unfortunate and we wish them luck.

Mark prepped a line for tomorrow night's anchorage because there are a lot of reports of people hooking an underground cable where we are anchoring. Mark prepped a special line so he could pull the anchor up backward to avoid the possibility of dragging a cable when pulling up the anchor. It is called a trip line.

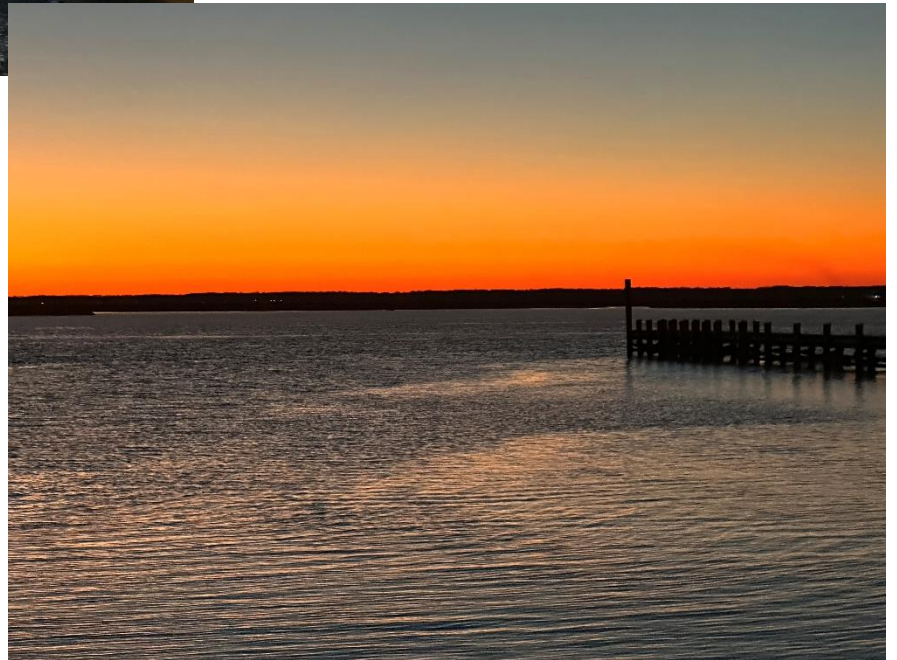
Little bit of trivia:

An anchor trip line is a stout line connected from the after end of the anchor fluke to a marker buoy so that the anchor can later be retrieved. The length of the line is adjusted to be straight up and down at high tide level so that the float marks the approximate position of the anchor.





This is a fishing village so it was not unlikely that we would be surrounded by fishing boats here at the marina. This boat came in and was unloading their catch shortly after witnessing this amazing sunset.



Stay
tuned



https://youtu.be/tiGRInam_KQ

Time is unrenewable and tomorrow is never promised so do it before you can't!