

**Follow along with us as we cruise onboard our  
56' Ocean Yacht.**

# *Somewhere on the Water*

Update Winter Cruise 2023-2024

Day 15 – Friday, December 15, 2023 – Chincoteague Island, VA to  
Hampton, VA

Departure time: 6:45 am

Arrival time: 4:20 pm

Total hours cruised: 9 hours 35 minutes

Average speed: 8 knots

Weather: 39 at 6:30 am by 10 am it warmed to 45 topping out at 51 toay.

We had 1-3 foot waves & winds 10 mph with 14 mph gusts



We spent 7-days in Chincoteague waiting for the weaterh, especially the winds to die down so we could get back out here on the water. Another weather event is coming Sunday so the captain has planned to get us through the Elizabeth River safe and sound at a dock in Chesapeake, VA by Saturday night.

6:30 am – alarm went off and Mark had the generator running by 6:39 and the engines shortly after. He untied us from the marina dock and we were in the Chincoteague Channel by the time I got out of bed and upstairs at 7:10 am. We are anticipating a 9-hour day cruising along the

Virginia shoreline towards Norfolk. The plan right now is to anchor in Hampton, VA near Fort Monroe across the harbor from Norfolk, VA. (Plans change all the time around here. We originally thought we would spend a few days anchoring in Norfolk, VA but that is not the plan anymore.)

---

Our cruise today took us into the southern tip of the Chesapeake Bay, over the Chesapeake Bay Bridge Tunnel (Lucius J Kellam Jr Bridge Tunnel), which by the way is so cool and if you ever have the chance to drive on it/through it, you should. We did it two years ago. You can find the videos on YouTube.

<https://youtu.be/8zFk5TkQbtK>

<https://youtu.be/CwyxFbS1jAY>

Of course, I had to take two videos. One for northbound and one for southbound!

Once we have passed by the Bridge-Tunnel we will head for the James River and we will bang a right and anchor for the night in Hampton, VA.

---

Just as we were leaving the Chincoteague Channel we saw a whale spout. 🐳

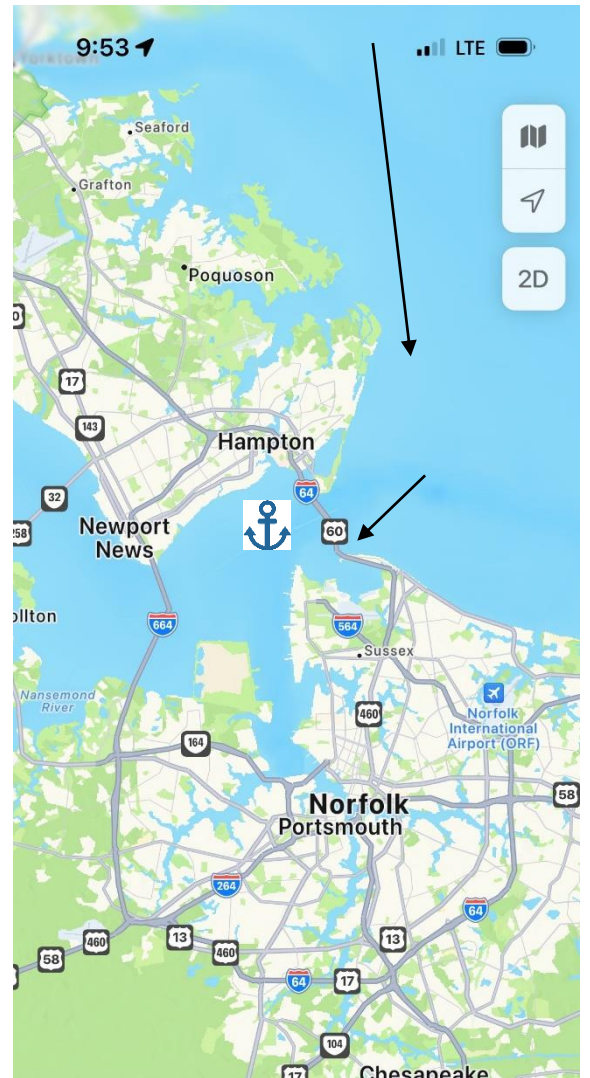
11:00 am – time for another turn at the helm.

While driving I got freaked and told Mark to slow the boat down that there was something out there but he asked why. Because I don't want to hit whatever it is.

Mark's explanation of why he wasn't going to slow down.

*It was 3 dolphins and you can head straight for them, they'll move, and/or start swimming with the boat.*

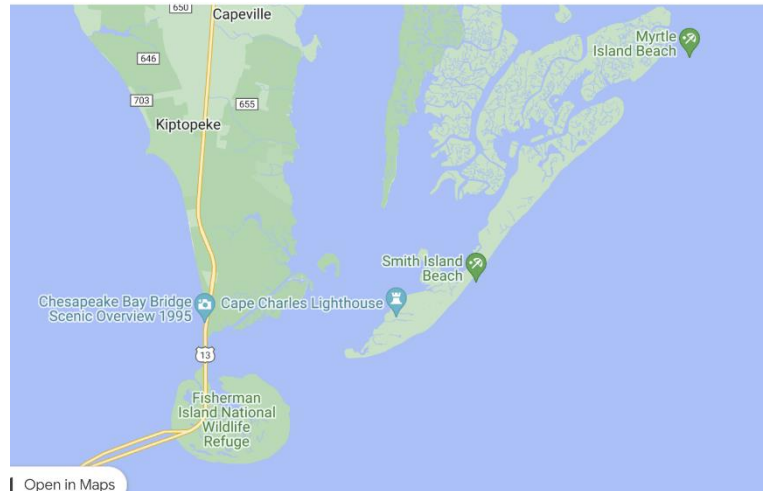
This pod did not swim with us. It did get my heart racing because it happened while I was at the helm. Mark was in the salon so there was no reason for me to get nervous, but I was, also excited.



### *Little bit of trivia:*

Smith Island is one of the Virginia Barrier Islands located adjacent to the southern end of the Eastern Shore of Virginia in Northampton County near Cape Charles. The island bears the name of Captain John Smith the explorer who visited it in 1608

Situated at the mouth of the Chesapeake Bay, Smith Island is easily recognized by the Cape Charles Lighthouse on its southern end – not to be confused with the Smith Point Lighthouse on the western shore of the Chesapeake Bay.



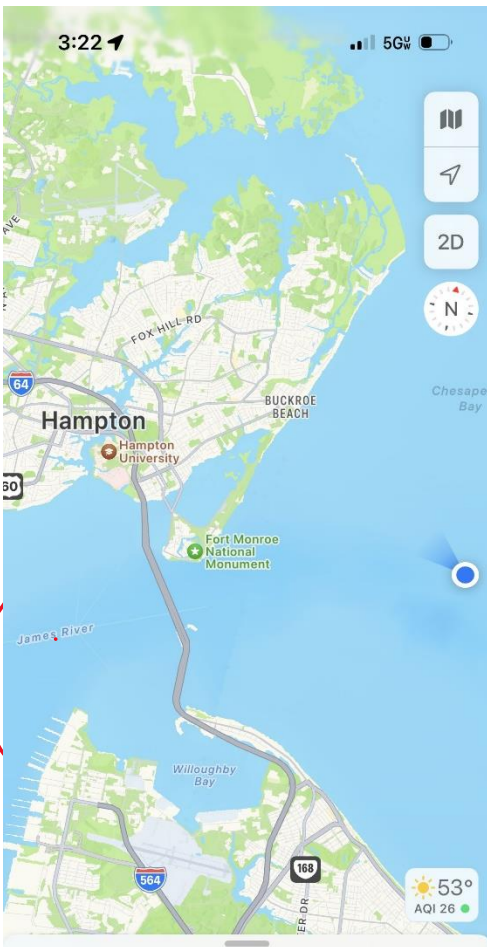
Cape Charles Light is the third lighthouse (built 1895) on Smith Island and, standing at 191 feet tall, it is the tallest lighthouse in Virginia and the second tallest in the country.



We saw another pod of dolphins off the starboard side. They were feeding and had no interest in us but it was exciting just the same.

The sun helped keep us nice and warm today. It is 65 in the salon.

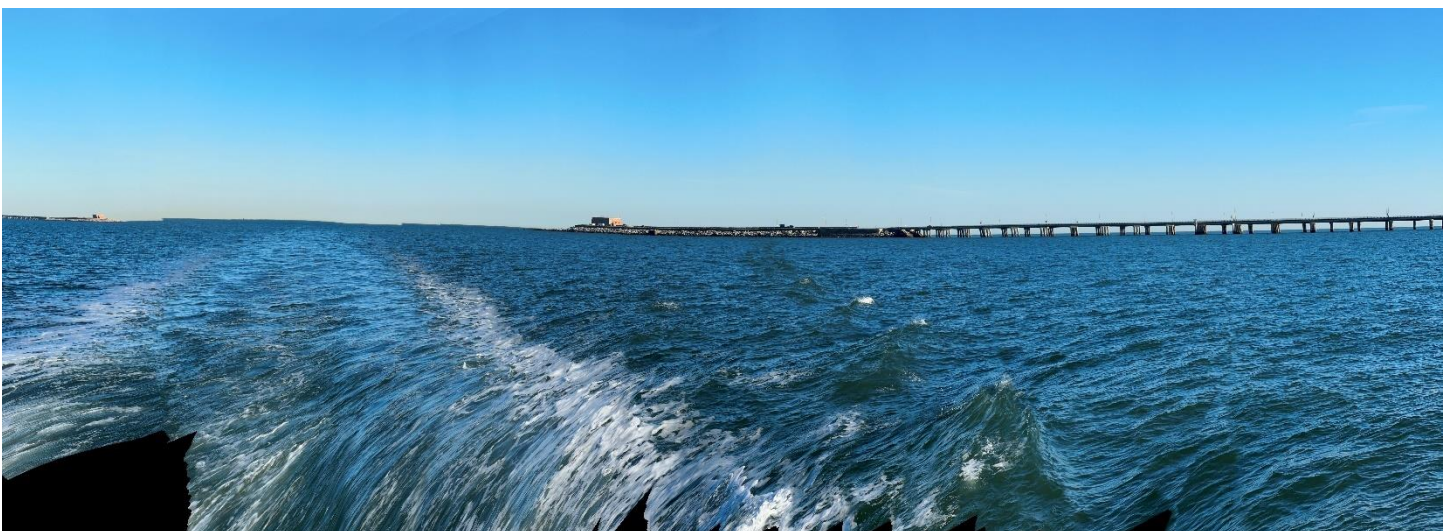
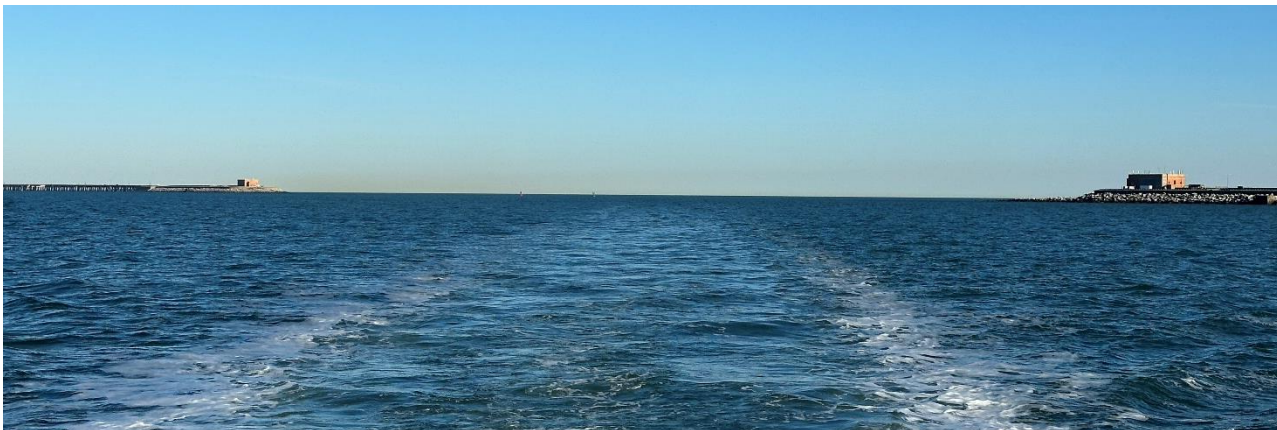
Mark saw some pelicans fly across the bow around 1:50 pm. We can see the bridge-tunnel but thanks to the current we are still 2 hours away from our anchorage. It has been a sunny, calm day on the ocean. I am blessed and grateful for our guardian angels who help keep us safe during our travels.

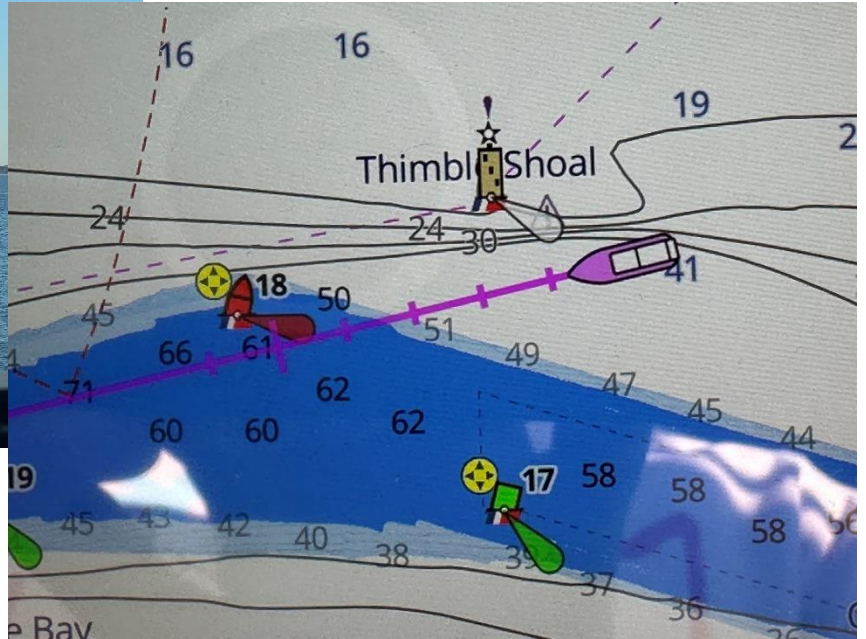
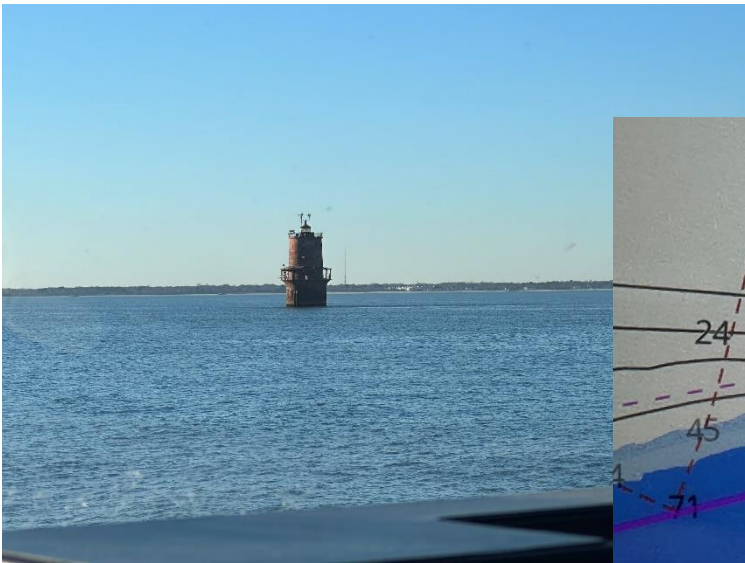


### *Little bit of Trivia:*

The Chesapeake Bay Bridge–Tunnel is a 17.6-mile bridge–tunnel that crosses the mouth of the Chesapeake Bay between Delmarva and Hampton Roads in the U.S. state of Virginia. It opened in 1964, replacing ferries that had operated since the 1930s.

The tunnels connect to the bridge sections via four manmade islands that are each as large as a football field. The depth of the water ranges from 25 to 100 feet, according to the Chesapeake Bay Bridge and Tunnel Commission.





### *Little bit of Trivia:*

Thimble Shoal Light is a sparkplug lighthouse in the Virginia portion of Chesapeake Bay, north of the Hampton Roads channel. The third light at this location, it is listed on the National Register of Historic Places.

This website has a lot of info: <https://www.lighthousefriends.com/light.asp?ID=443>

There are 164 gallons of diesel fuel left in our 500-gallon tank.  
4:20 pm Engines off, anchor set

It is 52 degrees in Hampton, VA with a 4:49 pm sunset.

Dinner: Sloppy Joes & veggies

What an amazing day on the water. These are the days you hope for, minus fighting the current at 6 – 7 knots, however, the seas were calm, the sun was beaming into the salon to keep us cozy, we saw dolphins and pelicans, and Valkyrie was running great! Thank you to all of you for joining us on our adventure.



Our anchor trip line.



Sunset in Hampton, VA

Stay  
tuned



[https://youtu.be/QM45M\\_vhz9I](https://youtu.be/QM45M_vhz9I)

Time is unrenewable and tomorrow is never promised so do it before you can't!

